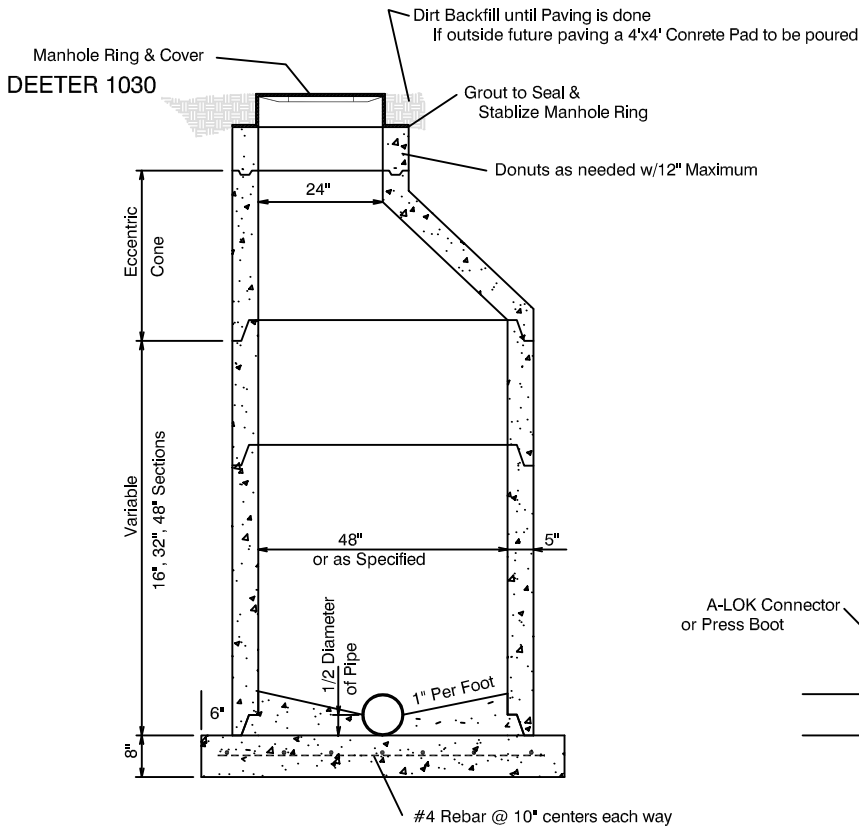


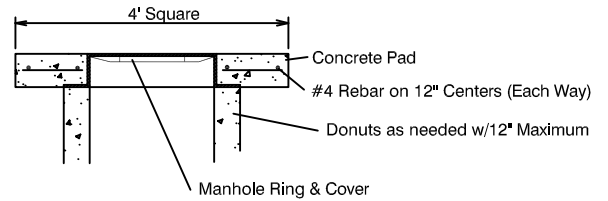
Plan View (Typical)

NOTES:

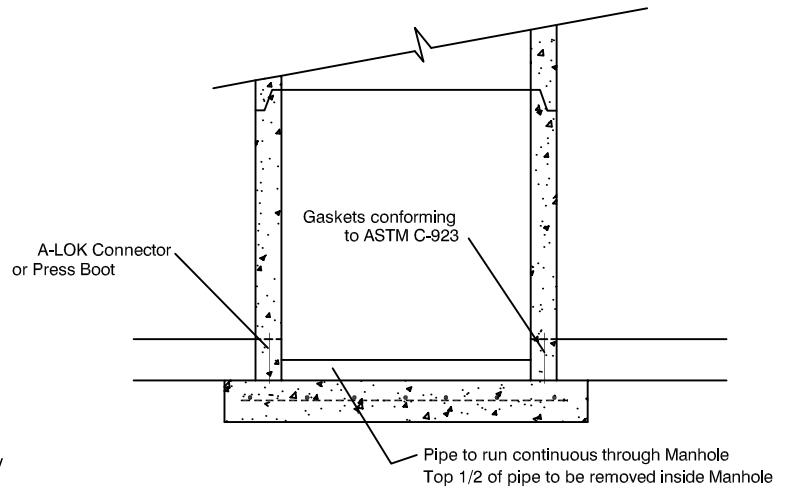
1. Manhole (Precast) reinforcement shall meet ASTM C-478 Requirements
2. Manhole Joints & Lift Holes shall be sealed with Portland Cement Mortar or Approved Equal
3. Connection of a Service Line to a Manhole - MUST OBTAIN WRITTEN PERMISSION from CITY ENGINEER
4. Precast base section may be used if approved by City Engineer



Manhole Sectional Elevation



Concrete Pad Detail

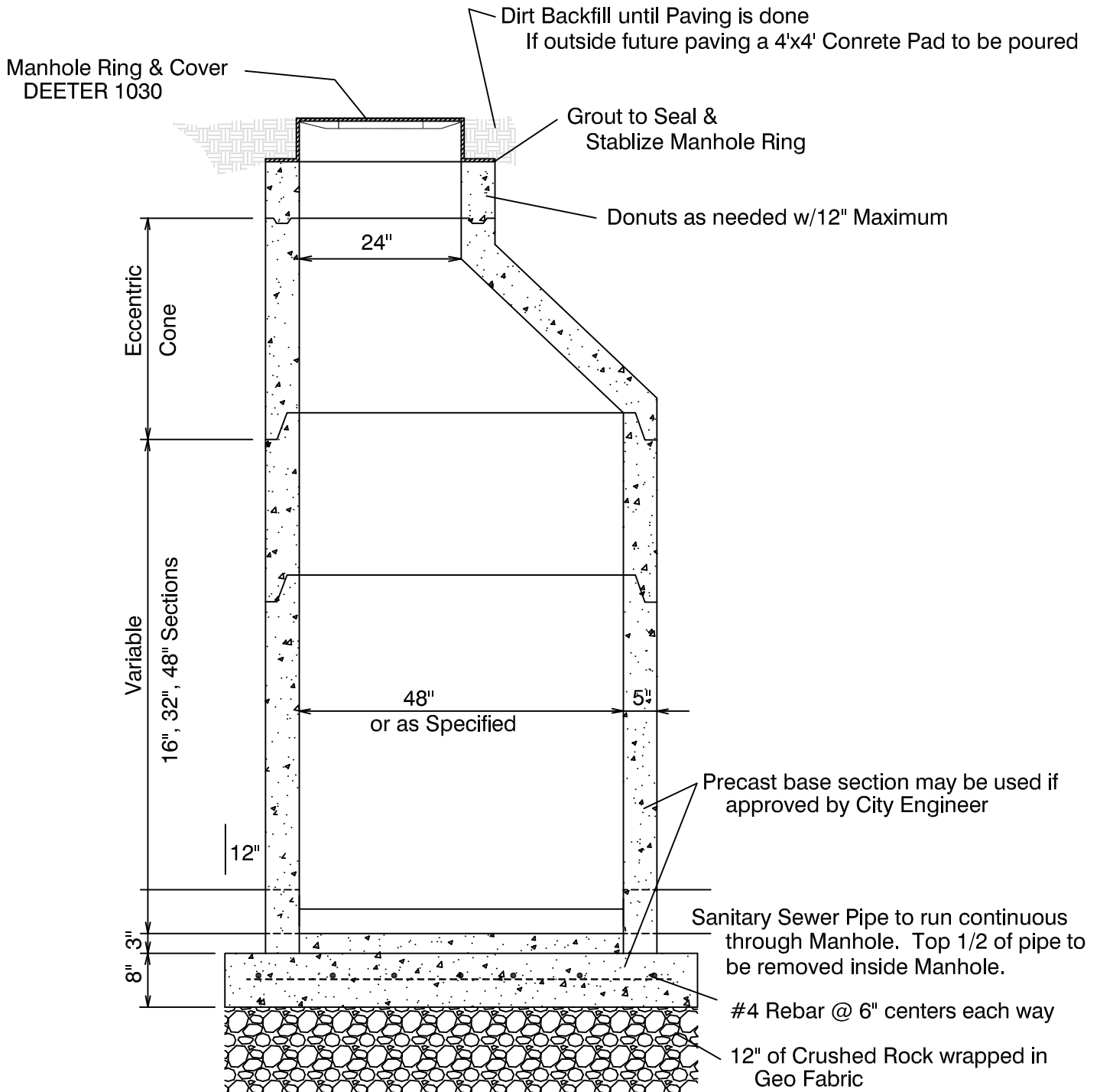


Pipe Section through Manhole

Sanitary Sewer Manhole

No Scale

This page intentionally left blank until detail can be finalized. Contact City Engineer for guidance.

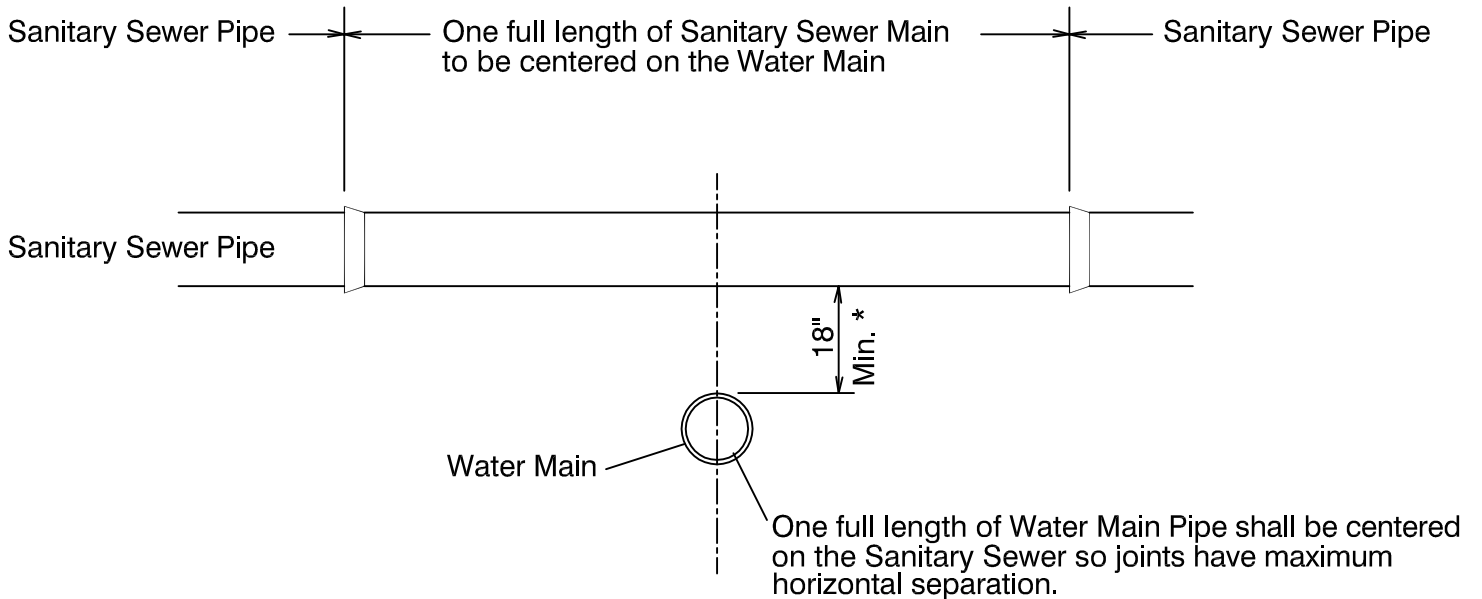


Special Manhole Construction for High Ground Water or Unstable Soils

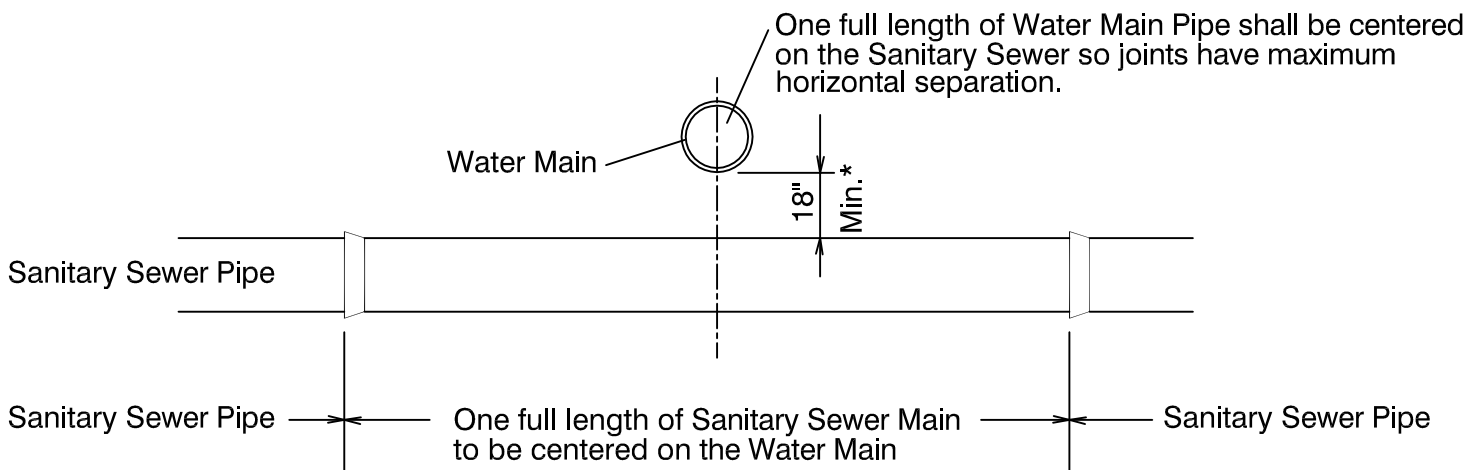
No Scale

4/2015

lar\sewerservice.dwg



Sanitary Sewer Crossing over Water Main



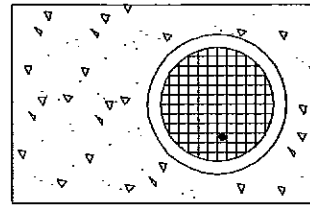
NOTE:

Crossing of sewer and water mains shall be in accordance with current Nebraska DHHS and DEQ requirements.

*If separation is less than 18" contact City Engineer. If separation is between 6" and 18" AWWA pressure class 150 psi pipe may be used for sewer main. One full stick of pipe shall be centered on water main if approved by City Engineer.

Sanitary Sewer Crossing under Water Main

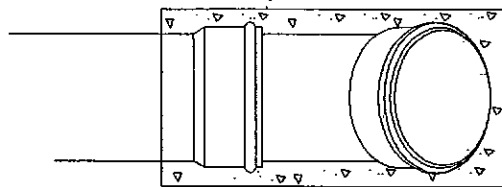
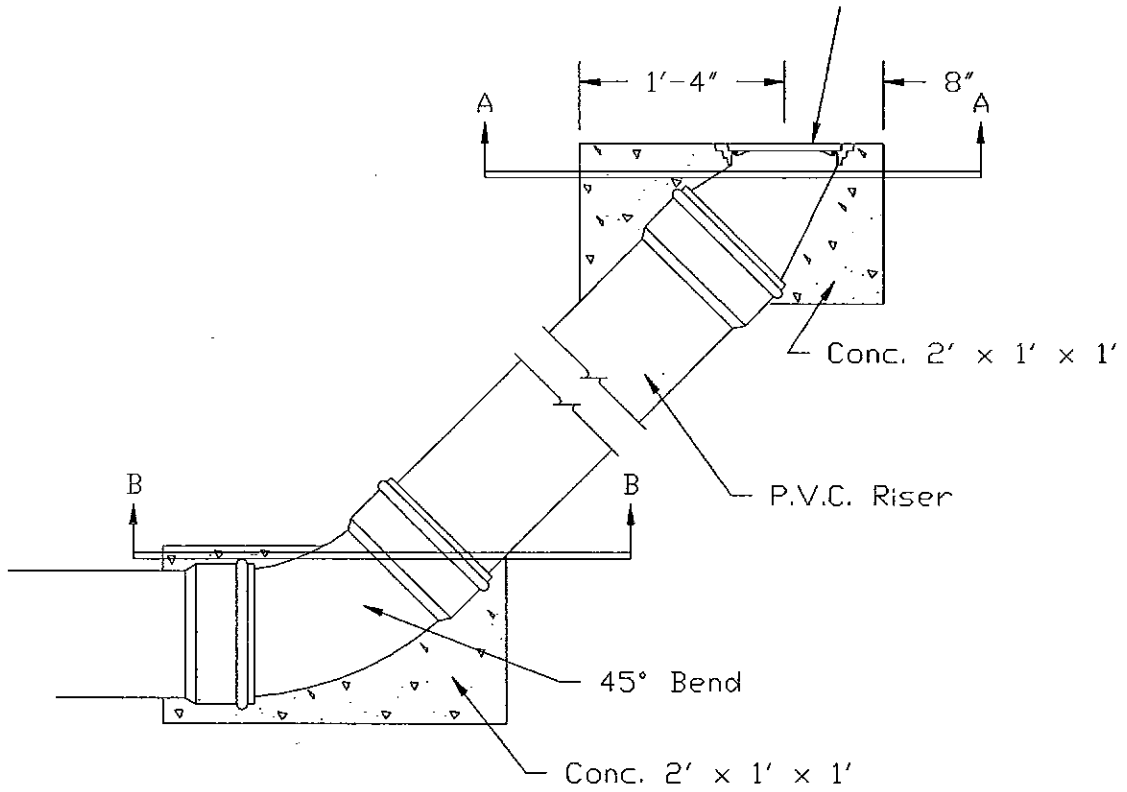
Sanitary Sewer - Water Main Crossings



Section A - A

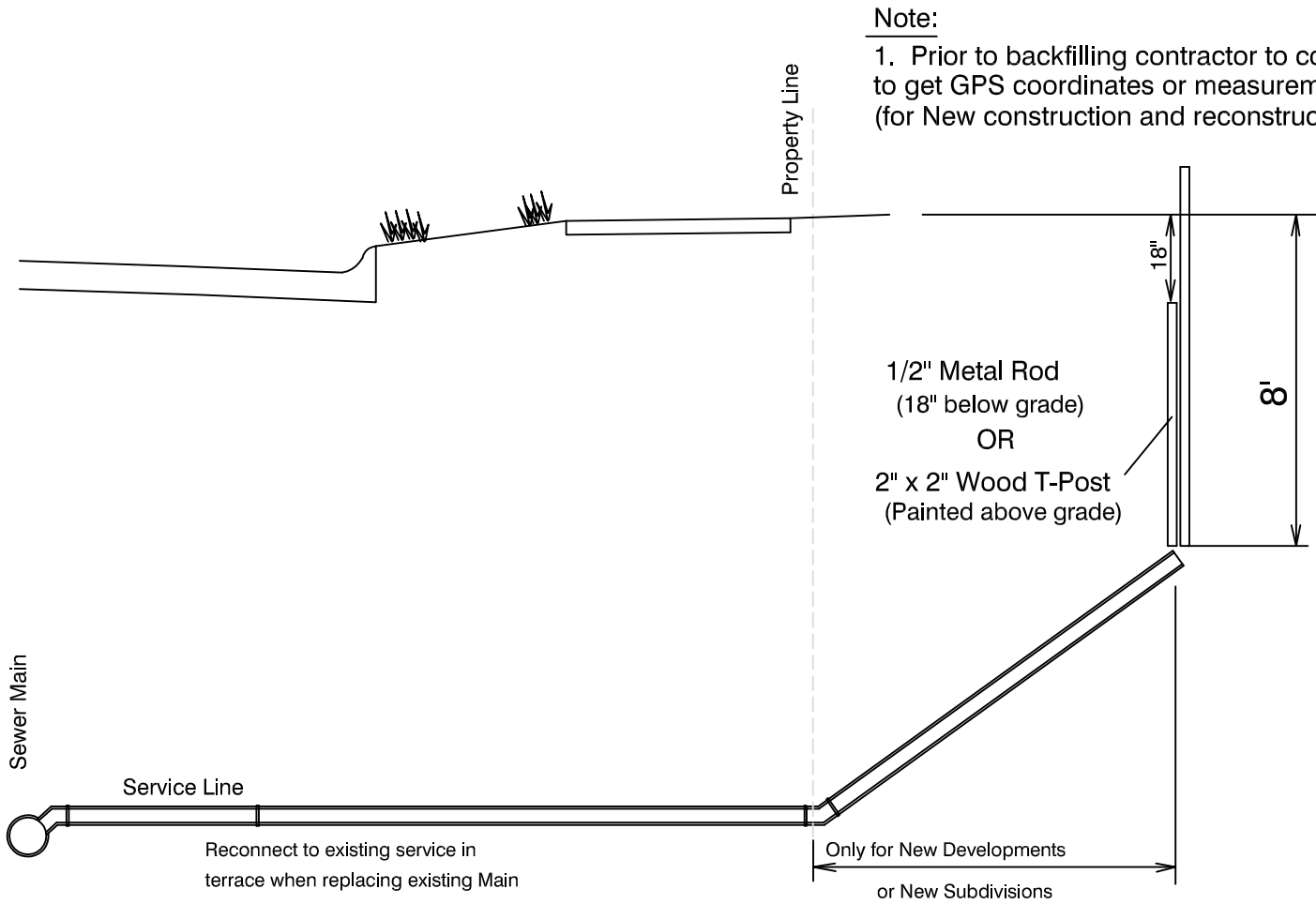
NOTE:
 Deeter Cleanout Ring
 & Solid Cover (Heavy
 Duty - 1810)
 or Equal

Top of Casting Elev. to be
 Established in the Field by
 the Engineer.



Section B - B

TYPICAL CLEANOUT



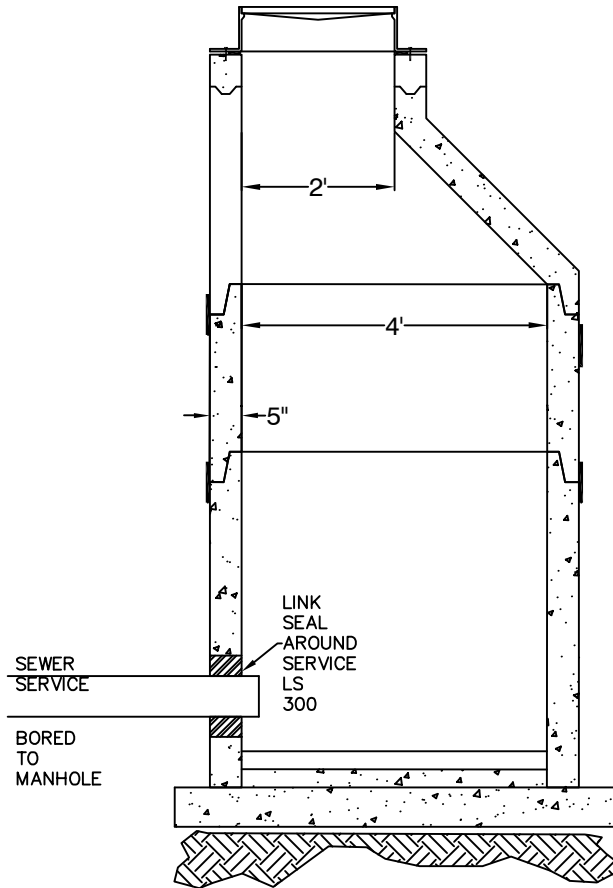
Note:

1. Prior to backfilling contractor to contact City or Engineer to get GPS coordinates or measurements for sanitary service stub or wye (for New construction and reconstruction of mains)

Sewer Service Detail

Page VI.17

Not to Scale



NOTES:

1. 45° ELBOW SHALL BE INSTALLED IF REQUIRED TO MEET FLOW LINE OF SEWER.
2. LINK SEAL SHALL BE LINK-SEAL MODULAR SEAL LS-300 OR APPROVED EQUAL

CONNECTION OF SERVICE LINE TO MANHOLE