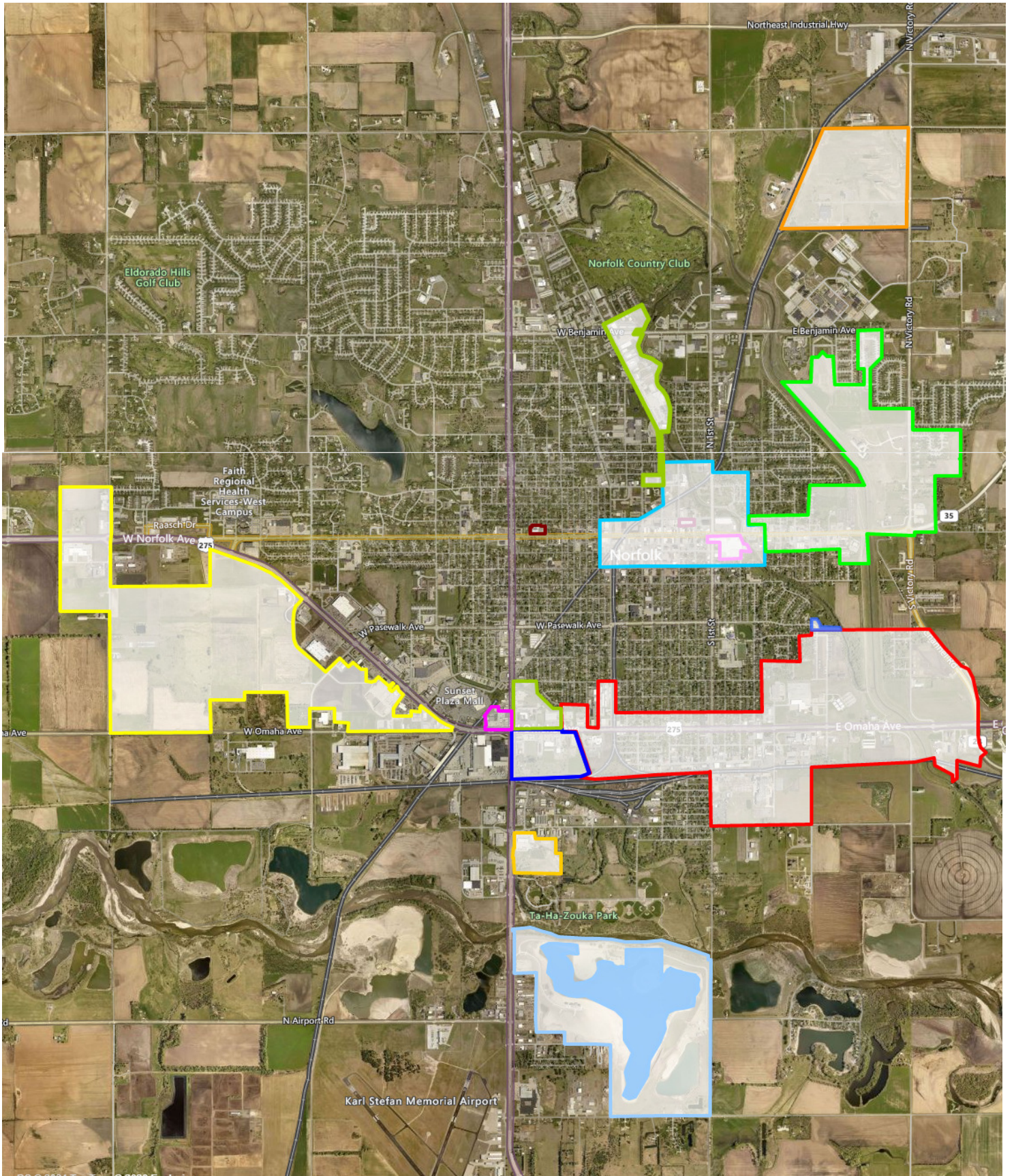


# BLIGHT & SUBSTANDARD DESIGNATED AREAS







Riverside Blvd. Redevelopment Area  
55.973 Acres  
Resolution No 2020-60  
12/07/2020





Pasewalk Circle

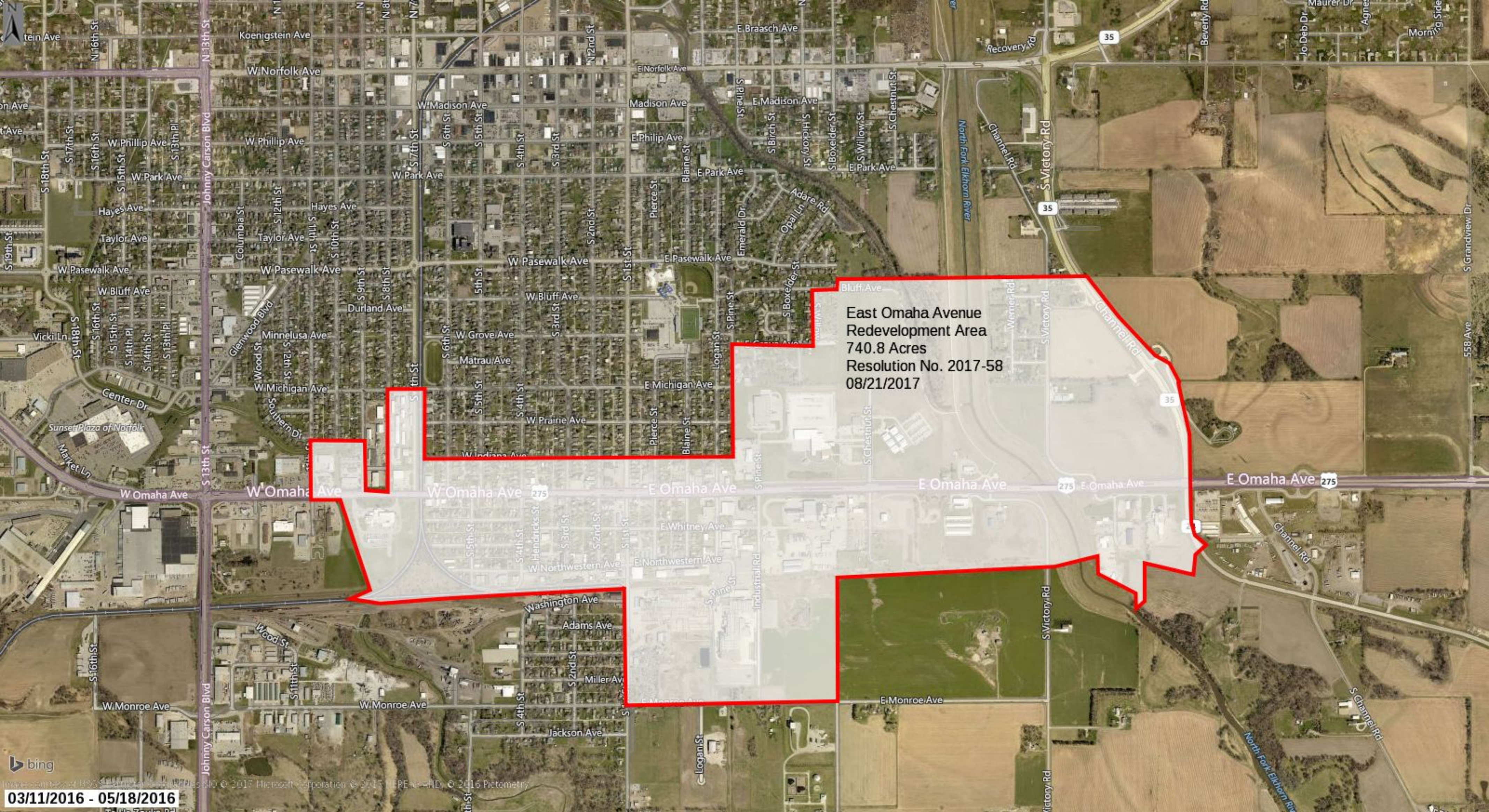
E Pasewalk Ave

East Omaha Avenue - Amended  
Redevelopment Area  
+ 1.15 Acres  
Ord #2019-59  
10/21/19

E Bluff Ave

E Bluff Ave





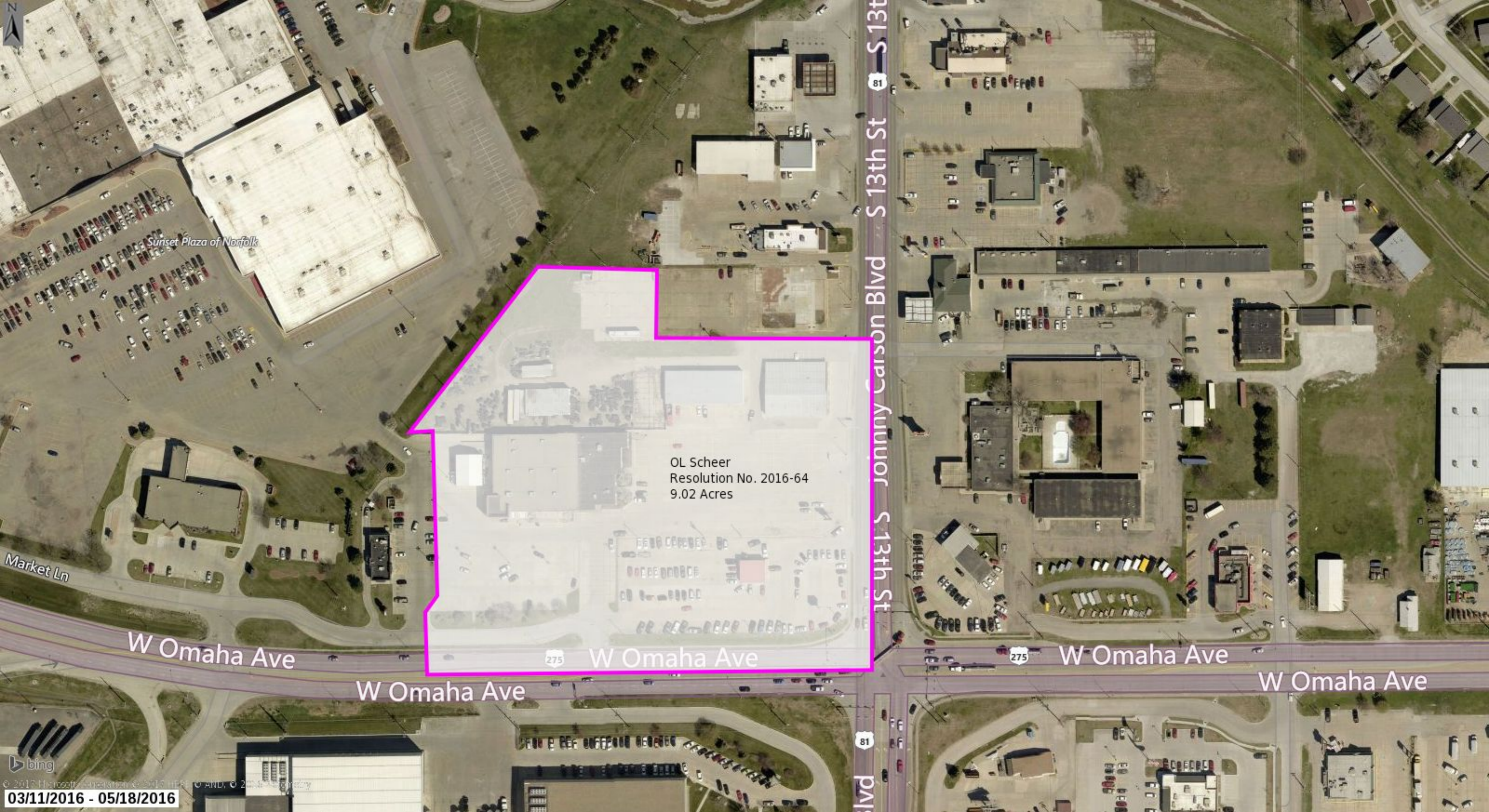
East Omaha Avenue  
Redevelopment Area  
740.8 Acres  
Resolution No. 2017-58  
08/21/2017





Medelman's Lake Development  
Resolution No. 2017-31  
Approved 6/5/2017  
292 Acres (Lake not included)





Sunset Plaza of Norfolk

OL Scheer  
Resolution No. 2016-64  
9.02 Acres

Market Ln

W Omaha Ave

W Omaha Ave

W Omaha Ave

W Omaha Ave

S 13th St

S 13th St

Jonny Carson Blvd

S 13th St

Jonny Carson Blvd

S 13th St





81 N

Johnny Carson Blvd

81

Johnny Carson

Koenigstein Ave

Koenigstein Ave

Koenigstein Ave

N 12th St

N 11th St

N 10th St

W Norfolk Ave

W Norfolk Ave

W Norfolk Ave

W Norfolk Ave

N 12th St

N 11th St

S 12th St

S 10th St

W Madison Ave

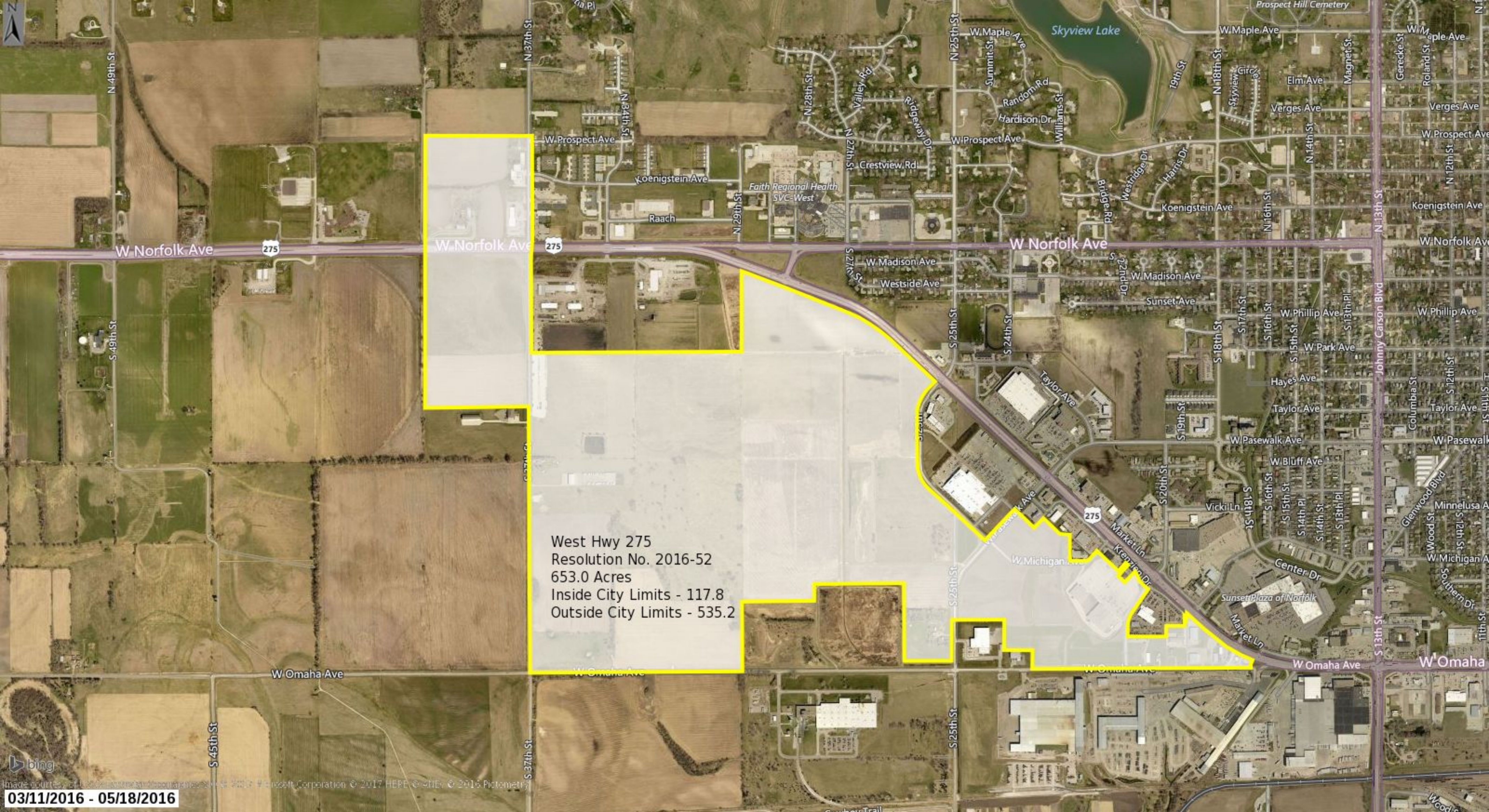
W Madison Ave

W Madison Ave

Skyline Apts  
Resolution No. 2016-59  
2.1 Acres

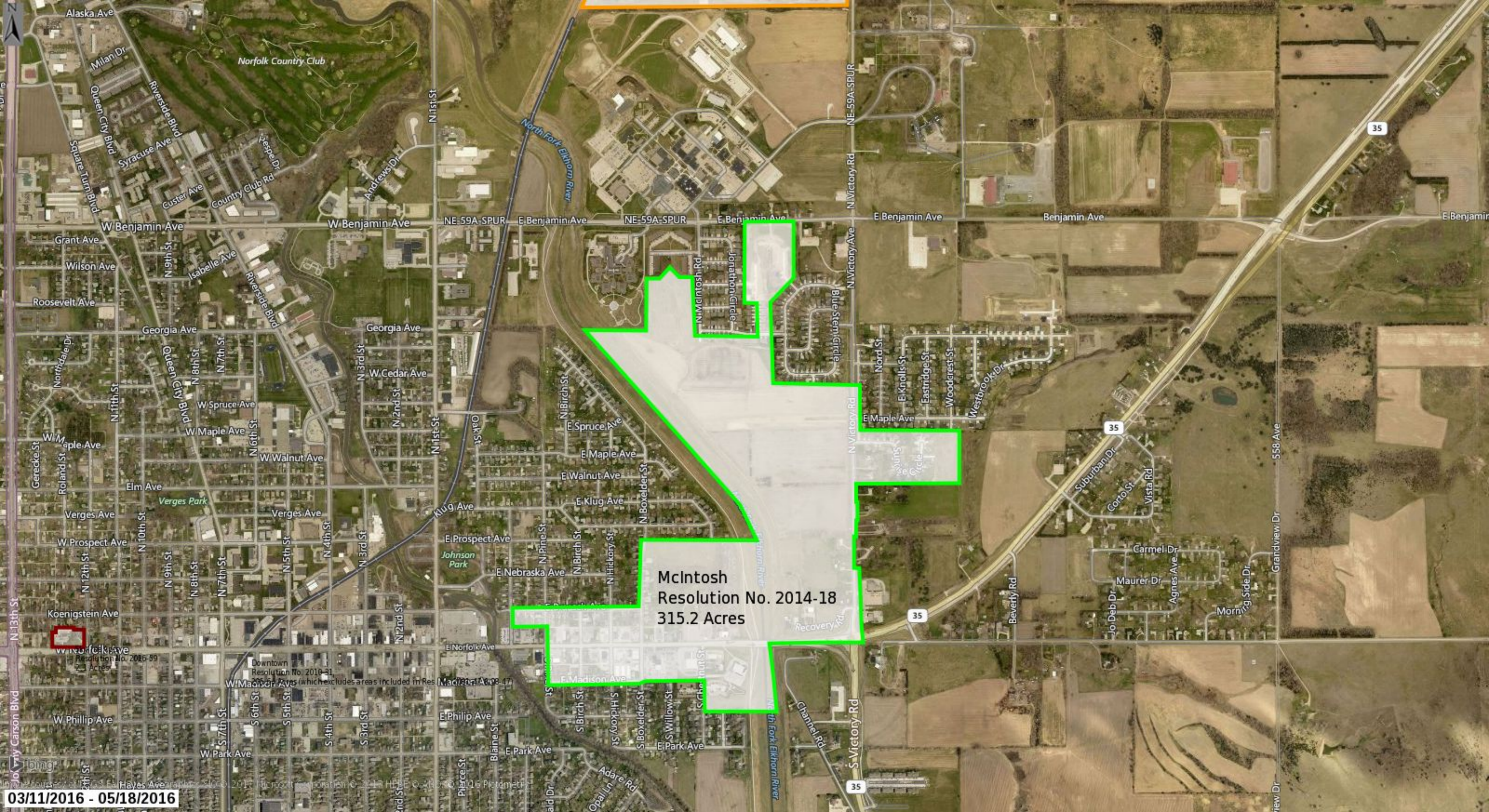
03/11/2016 - 05/18/2016





West Hwy 275  
Resolution No. 2016-52  
653.0 Acres  
Inside City Limits - 117.8  
Outside City Limits - 535.2



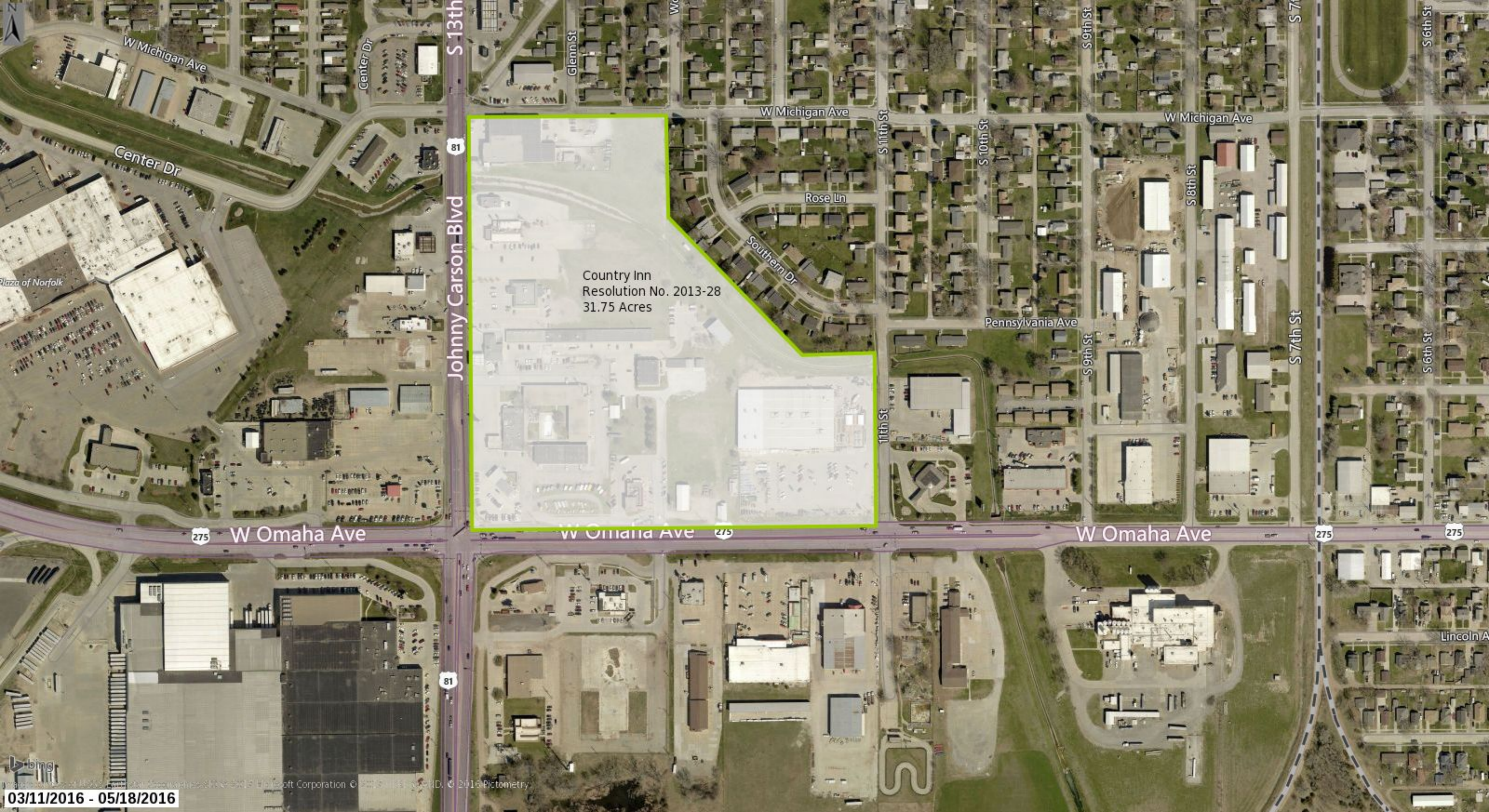


McIntosh  
Resolution No. 2014-18  
315.2 Acres

Koenigstein Ave  
W. Lincoln Ave  
Resolution No. 2016-99  
2.1 Acres

Downtown  
Resolution No. 2010-31  
W. Madison Ave (which includes areas included in Res. 2010-31)





Country Inn  
Resolution No. 2013-28  
31.75 Acres

275 W Omaha Ave

W Omaha Ave 275

W Omaha Ave 275

S 13th St  
Johnny Carson Blvd

81

81

S 11th St

11th St

S 10th St

S 9th St

S 9th St

S 8th St

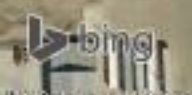
S 7th St

S 7

S 6th St

S 6th St

Lincoln A

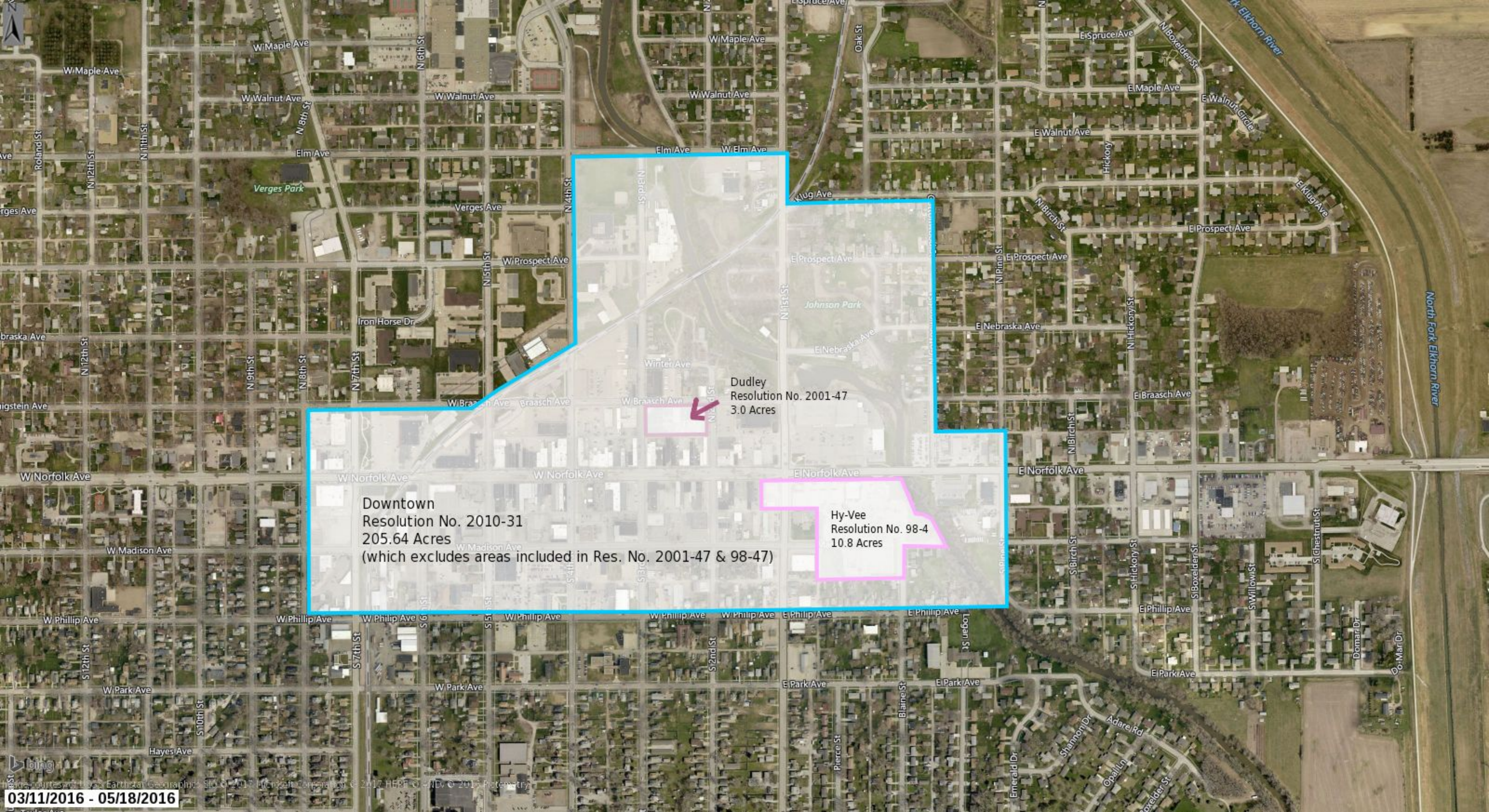


03/11/2016 - 05/18/2016









Dudley Resolution No. 2001-47  
3.0 Acres

Downtown Resolution No. 2010-31  
205.64 Acres  
(which excludes areas included in Res. No. 2001-47 & 98-47)

Hy-Vee Resolution No. 98-4  
10.8 Acres







Johnny Carson Blvd

81

81

Johnny Carson Blvd

Peterbilt / Roman Pack  
Resolution No. 2007-13  
30.26 Acres





The Soy Redevelopment Area  
Resolution No. 2007-12  
177.87 Acres

E Eisenhower Ave

E Eisenhower Ave

Eisenhower Ave - 844th Rd

Eisenhower Ave - 844th Rd

N15th St

Victory Rd

557th Ave

N Victory Rd

NE 59A-5PUR

NE 59A-5PUR N Victory Rd

Magnell Dr

North Fork Elkhorn River

North Fork Elkhorn River







N 4th St

Winter Ave

N 1st St

E Nebraska Ave

Oak St

Oak St

N 2nd St

W Braasch Ave

W Braasch Ave

Dudley  
Resolution No. 2001-47  
3.0 Acres

N 4th St

N 1st St

W Norfolk Ave

W Norfolk Ave

E Norfolk Ave

W Norfolk Ave

W Norfolk Ave

S 2nd St

S 1st St



